

EN50131-3:2009
EN50131-1:2006+A1:2009
PD6662:2010

EURO 46S:
Security Grade 2
Environmental Class II
EURO 46L, EURO 162 & EURO 280:
Security Grade 3
Environmental Class II

Software Version >9.1



User Manual

For the EURO 46, 162 and 280

SMS CHARGES:

If you're using the SMS text messaging facility of the panel, you will be charged at 50p plus your network provider's access charge every 18 days (for an SMS Server Update call). This charge is raised via use of a premium rate telephone number. Please see page 24 for details.



RINS1527-5

Contents Page

Contents Page	2
1. Introduction	4
1.1 Intelligent Setting	4
1.2 Setting and Unsetting Methods	4
1.3 Setting and Unsetting Peripherals	4
1.4 Areas	4
1.5 Security	4
1.6 Specifications	4
2. The Setting Devices.....	5
2.1 The Keypad (EUR-064).....	5
2.2 The Internal Tag Reader (EUR-107)	5
2.3 The External Tag Reader (EUR-108).....	6
3. The Wireless Keyfob (KF4-WE).....	6
3.1 Locking the Keyfob	6
3.2 Buttons.....	7
3.3 Quick Setting.....	7
4. Using Predictive Text	8
5. Setting The EURO System	9
5.1 Using a PIN Code or Tag.....	9
5.2 Using the Wireless Keyfob (KF4-WE)	9
6. Unsetting The System (No Alarms)	10
6.1 Using a PIN Code or Tag.....	10
6.2 Using a Wireless Keyfob (KF4-WE)	10
7. Unsetting after an alarm	11
7.1 Using a PIN Code or Tag.....	11
7.2 Using a Wireless Keyfob (KF4-WE)	11
8. Using a Tag Reader	12
8.1 Setting and Unsetting	12
8.2 Entry Control	12
9. Anti Code / Engineer Restore Facility.....	13
9.1 Anti-Code.....	13
9.2 Engineer Reset.....	13
10. Intelligent Setting	14
11. Fault Indications / Unable To Set	15
11.1 Fault Indications.....	15
11.2 Unable to Set.....	15
11.3 Keyfob Fault Indications	15
12. Advanced Functions	16
12.1 Chime Feature	16
12.2 Omitting Inputs.....	16
12.3 Keypad Hold Up.....	16
13. Master Manager Menu	17
13.1 Entering the Master Manager Menu	17
13.2 Exiting the Master Manager Menu	17
13.3 Set Date and Time.....	18
13.4 Omit Inputs	18
13.5 Change Codes (Adding codes, tags and keyfobs).....	19
13.6 Review Logs	21
13.7 Phonebook	21
13.8 Walk Test.....	22
13.9 Siren Test.....	22
13.10 Start CHC SMS Update	22
13.11 Dial Out Menu	23
13.12 Allow Engineer Menu	23
13.13 Block Remote Set	23
13.14 Block UDL.....	24
14. Disclaimer	24
15. Engineer Contacts and Tables.....	25
15.1 Engineer Information	25
15.2 Certification	25
15.3 Input Contact Table	26
15.4 Code Table	28

Default User Code: 1234

Default Master Manager: 2222

1. Introduction

Thank you for choosing the EURO alarm system as protection for your property. It is designed to conform to the latest intruder standards in the industry.

There are many features that the EURO alarm system has, and these can be explained in detail by your alarm engineer.

Wireless peripherals may be used on the EURO alarm system; these include wireless sensors and wireless set/unset keyfobs. Please ask your alarm engineer for more details.

With a host of features and accessories, the EURO alarm system offers maximum flexibility and ensures that each EURO alarm system can be individually tailored to the required application. Some of these features are described below:

1.1 Intelligent Setting

This feature enables the control unit to automatically recognise when you're at home or away. Using this knowledge the EURO alarm system is able to set itself in the correct mode without you having to choose.

1.2 Setting and Unsetting Methods

A variety of methods are available for setting and unsetting the EURO alarm system. Please ask your alarm engineer for more information about each of the below methods:

- 1) Setting/Unsetting using a user code of your choice
- 2) Setting/Unsetting using a Tag programmed specifically for you
- 3) Setting/Unsetting using a Keyfob programmed specifically for you

1.3 Setting and Unsetting Peripherals

There are also a variety of peripherals that can be used to set/unset your EURO alarm system:

- 1) The Keypad: A user friendly LCD remote keypad that can allow setting via user codes, tags or keyfobs.
- 2) The Internal Tag Reader: A tag can simply be presented to a tag reader which will set or unset the EURO alarm system. This can be used to open doors as part of an Entry Control if required. This is for internal use only.
- 3) The External Tag Reader: A tag can simply be presented to a tag reader which will set or unset the EURO alarm system. This can be used to open doors as part of an Entry Control if required. This is both for internal and external use.

1.4 Areas

The EURO alarm system allows the programming of different area's that can be used in whichever way you like, for example:

Area A: Full set of the house

Area B: Downstairs unset. Upstairs set.

Area C: Garage set. Rest of house unset.

The number of areas allowed depends on the model:

EURO 46: 8 **EURO 162:**12 **EURO 280:**14

1.5 Security

For your security, the keypad becomes disabled for 90 seconds after 30 incorrect key-presses, or after 6 attempts to present invalid tags. It will subsequently be disabled again after 7 further incorrect key-presses or after another invalid tag is presented. Once a correct code or tag has been registered, the keypad is returned to normal operation.

1.6 Specifications

Please note that the specification of EURO alarm systems may vary between models and some facilities in the manual may not be available. Check with your alarm engineer for full details. This equipment may be used in systems installed to a lower grade, which will be agreed with your alarm engineer company. There are no user serviceable parts contained in this product.

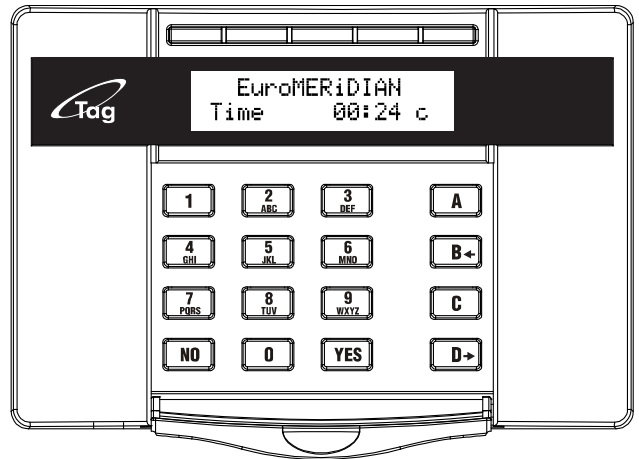
2. The Setting Devices

2.1 The Keypad (EUR-064)

Additional wired keypads may also be connected to the EURO alarm system, please ask your alarm engineer for more information.

The keypad has the following keys:

- A** = Exits the Master Manager menu (page: 17), and selects Area A when setting.
- B** = Moves backwards in the Master Manager menu (page: 17), and selects Area B when setting.
- C** = Enables chime, displays additional information in the event log, and selects Area C when setting.
- D** = Moves forward in the log, scrolls between options and enters the Master Manager menu (page: 17), and selects Area D when setting.
- YES** = Selects commands
- NO** = Cancels items, resets the panel and moves to next item in a menu item.



2.1.1 LED Indications

All setting points (Keypads or Tag Readers) have LEDs to clearly indicate what is happening.



ALERT ALARM TAMPER FAULT UNSET

The **'Alert'** LED will flash if there is information available to you. Enter your code to see the information. After a code has been entered, one of the following LEDs will light: Alarm, tamper or fault. The relevant detail of the problem will be shown on the display. To clear the display, press the 'Yes' key (or the display will clear automatically after 3 minutes.)

The **'Alarm'** LED will flash after code entry if an alarm occurs.

The **'Tamper'** LED will flash after code entry if the wiring or equipment is tampered with.

The **'Fault'** LED will light after code entry to indicate if a technical fault occurs.

The **'Unset'** LED will light for 5 seconds if the panel is completely Unset (steady) or if some areas remain Set (flashing). It will also illuminate during the setting procedure, turning off once set.

2.2 The Internal Tag Reader (EUR-107)

The Internal Tag Reader can be used for setting/unsetting, entry control or access control. Ask your engineer for more details.



Tag Area (Where you present your tag to set/unset)



Alert LED



Alarm LED



Tamper LED



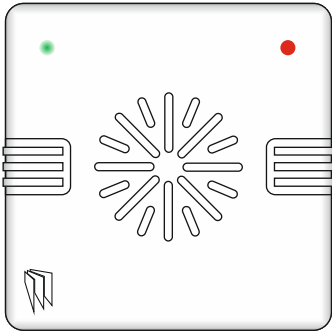
Fault LED



Unset LED

2.3 The External Tag Reader (EUR-108)

The External Tag Reader can be used for setting/unsetting, entry control or access control. Ask your engineer for more details.



To set/unset the system using the External Tag Reader, present a pre-programmed tag to the centre of the prox.

The prox will display the system status: Green = Unset. Red = Set.

Present the tag again within 10 seconds and the system will set or unset. The system will then set depending on the type of exit mode programmed (Final door, Timed or Push to set)

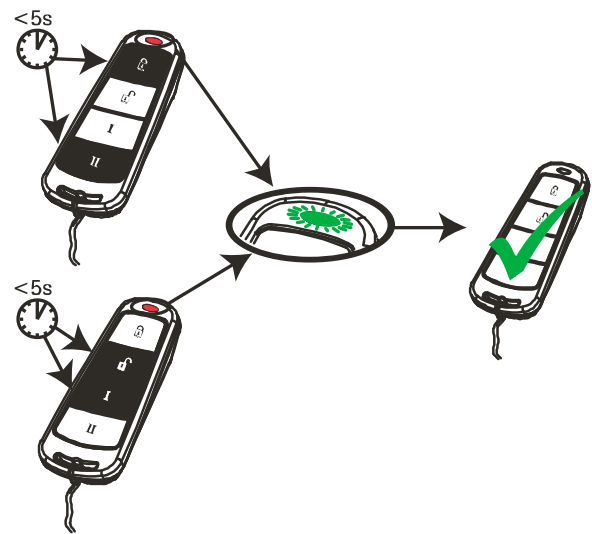
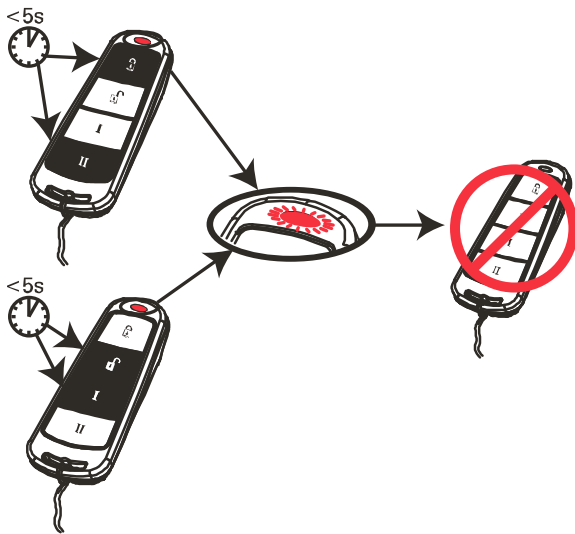
3. The Wireless Keyfob (KF4-WE)

The wireless keyfob has 4 buttons that may be programmed for specific purposes (please see 'CHANGE CODES' on page 19 for more information).

NOTE: This is only available if your alarm engineer has enabled the wireless technology.





3.1 Locking the Keyfob

All 4 buttons on the keyfob may be 'locked' so that any accidental presses will not affect your wireless alarm system (for example, this protects the buttons from being pressed accidentally if a keyfob is in someone's pocket).



3.2 Buttons

The buttons can be customised (see Change Codes, page 19) to operate as desired. The table below gives the defaults of how each button is programmed. These can be changed in the 'Change Codes' function – see page: 19.

<p>LOCK BUTTON = Set Area A When pressed, Area A will start to set.</p>	
<p>UNLOCK BUTTON = Unset Area. When pressed, the wireless alarm system will unset any area that is already set.</p>	
<p>I BUTTON = Set Area B When pressed, the Area B will start to set.</p>	
<p>II BUTTON = Show Status When pressed, if the GREEN LED is shown then the wireless alarm system will be unset. If the RED LED is shown then the wireless alarm system will be set.</p>	

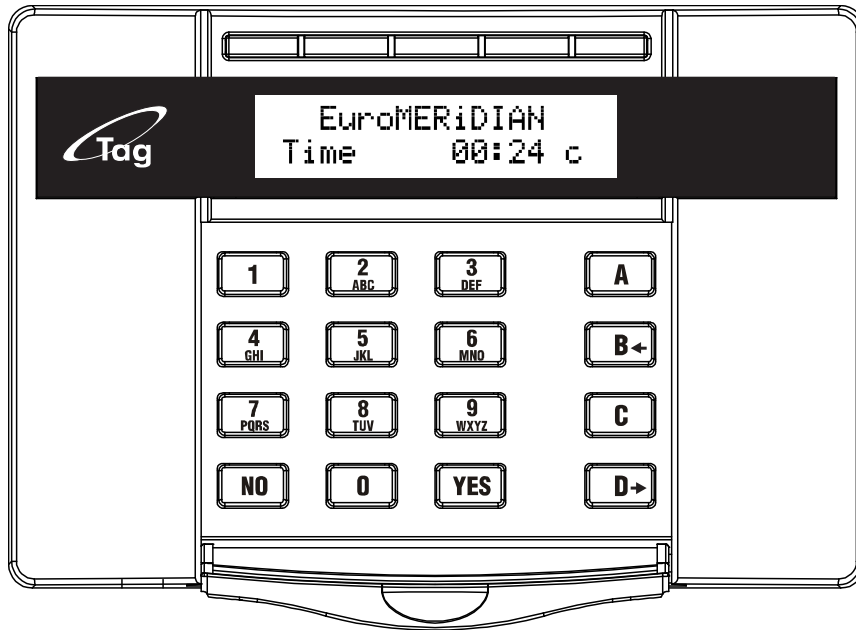
3.3 Quick Setting

If one of the buttons is programmed as 'Set Area', the EURO alarm system can be set by pressing the programmed button on the keyfob. The keypad will then start to count down the exit time, or wait for a 'final door' to be opened and closed or wait for a Push to Set (PTS) button to be pressed, depending what the exit mode is programmed as by the engineer.

Once the EURO alarm system is in this 'setting' stage, it is possible to 'quick set' the system by pressing the same button again; this will reduce the time to set to 'immediate setting'. The alarm panel will revert to the normal display with the time showing, but a beep will be heard once the system has been set.

NOTE: This feature cannot be used if 'Intelligent Set' has been enabled by your alarm engineer.

4. Using Predictive Text



The EURO alarm system incorporates predictive text, so the system will predict the word that is being spelt.

For example, if you type 'John', press **5** once and the name 'Julia' will appear. Press **D** to move the cursor over the 'u', and press **6** 3 times to change it to an 'o'. The name 'John' will now appear. Press **YES** to accept.

If the word that you require does not appear in the list, just continue typing the word letter by letter.

In addition, the **A** **B** **C** **D** keys are used as follows:

- A** = make the character into a capital
- B** = move cursor left
- C** = clears cursor / adds a space
- D** = moves cursor right

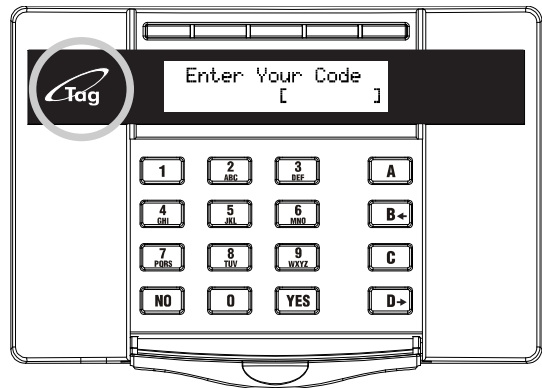
5. Setting The EURO System

5.1 Using a PIN Code or Tag

Enter a valid user code or present a valid tag to the tag symbol as shown.

If any faults appear after a code has been entered, refer to page: 15.

NOTE: Before you set your EURO alarm system, ensure all doors and windows are closed and any pets or people are excluded from areas protected by movement sensors.



Enter the area you wish to set, and press **YES**.

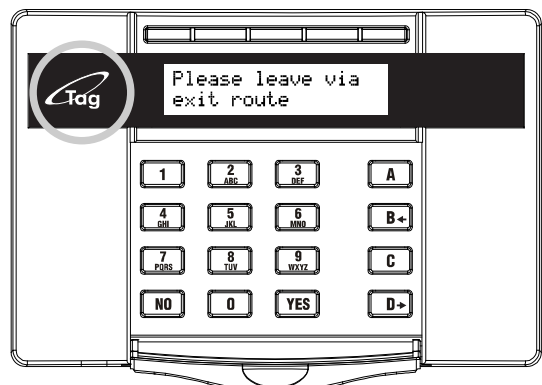


There are three different setting methods your alarm engineer will instruct you through:

Final Door: Leave the building and make sure the exit door is closed properly.


Timed: Make sure you leave the building before the timer shown on the keypad expires.


Push to set: Press the push to set button installed by your alarm engineer to set the system.



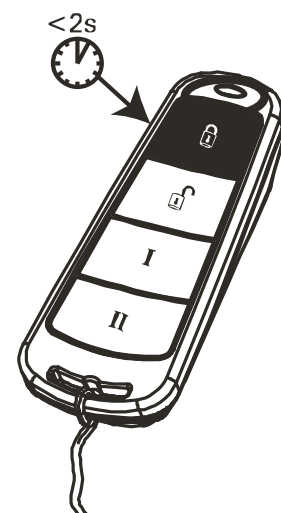
5.2 Using the Wireless Keyfob (KF4-WE)

NOTE: This is only available if your alarm engineer has enabled the wireless technology.

To set via a keyfob. Press  and hold for more than 2 seconds. The keyfob LED will start to flash **GREEN** indicating that the system is starting to set.

'Please wait setting wireless' will be displayed on the keypad and the programmed area will begin to set. To '**quick set**', press and hold the  key a second time for 4 seconds.

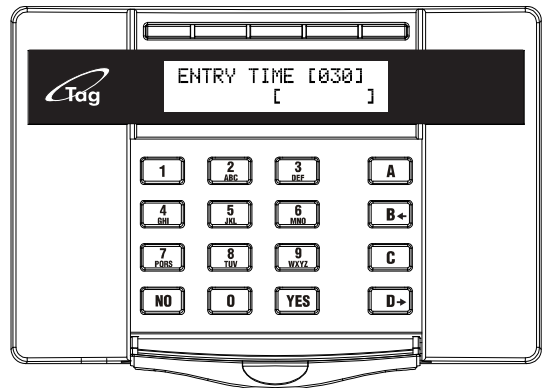
Once set, the keyfob LED will illuminate **RED** indicating that the system is now set.



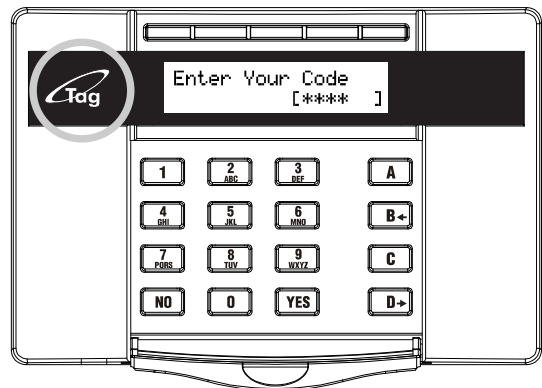
6. Unsetting The System (No Alarms)

6.1 Using a PIN Code or Tag

Enter the building, the 'entry time' will start and the entry tone will sound.

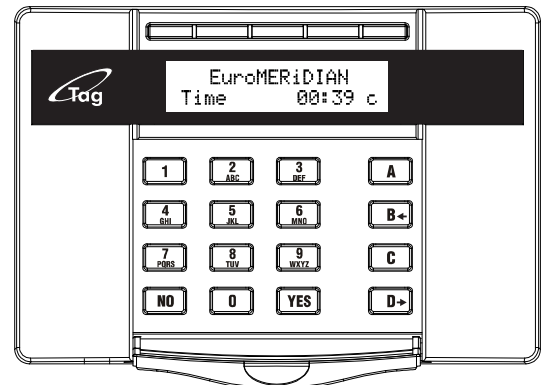


Enter a valid user code or present a valid tag to the tag symbol as shown.




The area that the code is assigned to will be unset.

NOTE: If 'flexi-unset' is disabled then the EURO alarm system will automatically unset that area once a valid user code or tag is presented. This function needs to be enabled by your engineer

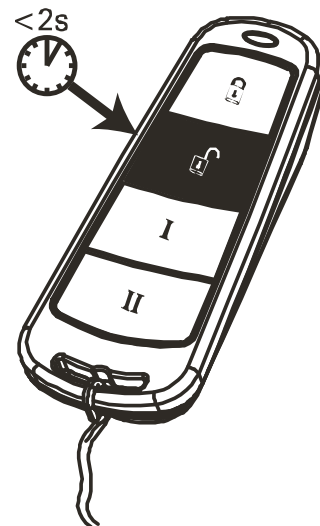


6.2 Using a Wireless Keyfob (KF4-WE)

NOTE 1: This is only available if your alarm engineer has enabled the wireless technology.

To unset via a keyfob. Press . The keyfob LED will start to flash **GREEN** indicating that the system has unset.

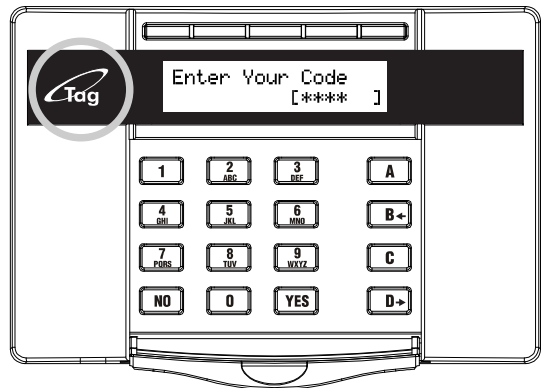
NOTE 2: Unsetting with a keyfob will only be allowed if your alarm engineer has enabled this.



7. Unsetting after an alarm

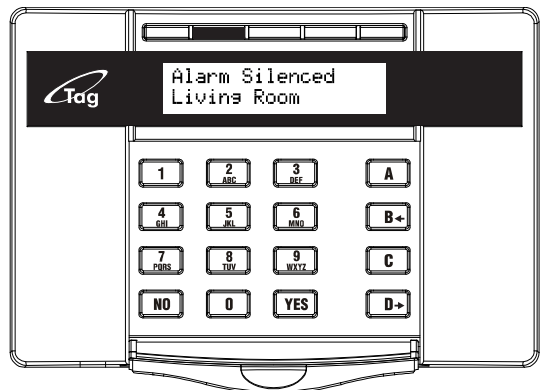
7.1 Using a PIN Code or Tag

Enter a valid user code or present a valid tag to the Tag symbol as shown.

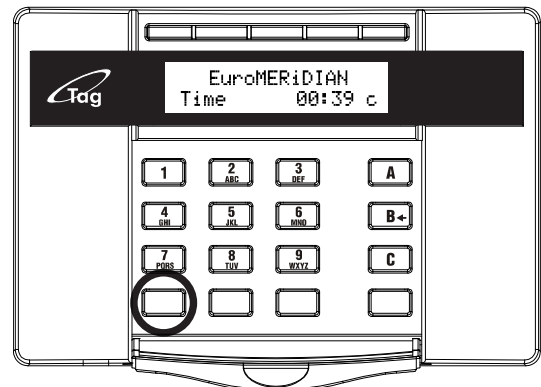


The alarm symbol will flash indicating there has been an alarm activation and the keypad will display which input has activated.

NOTE: If 'flexi-unset' is disabled then the EURO alarm system will automatically unset that area once a valid user code or tag is presented. This function needs to be enabled by your engineer




Press **NO** to reset the system.

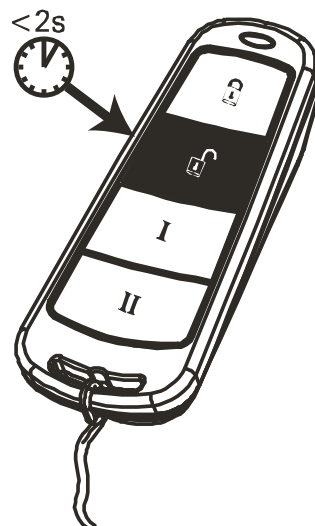


7.2 Using a Wireless Keyfob (KF4-WE)

NOTE 1: This is only available if your alarm engineer has enabled the wireless technology.

NOTE 2: Unsetting with a keyfob will only be allowed if your engineer has enabled this.

To unset via a keyfob. Press  .
The keyfob LED will start to flash GREEN indicating that the system has unset.
Resetting the EURO alarm system after an alarm can only be done at the keypad.



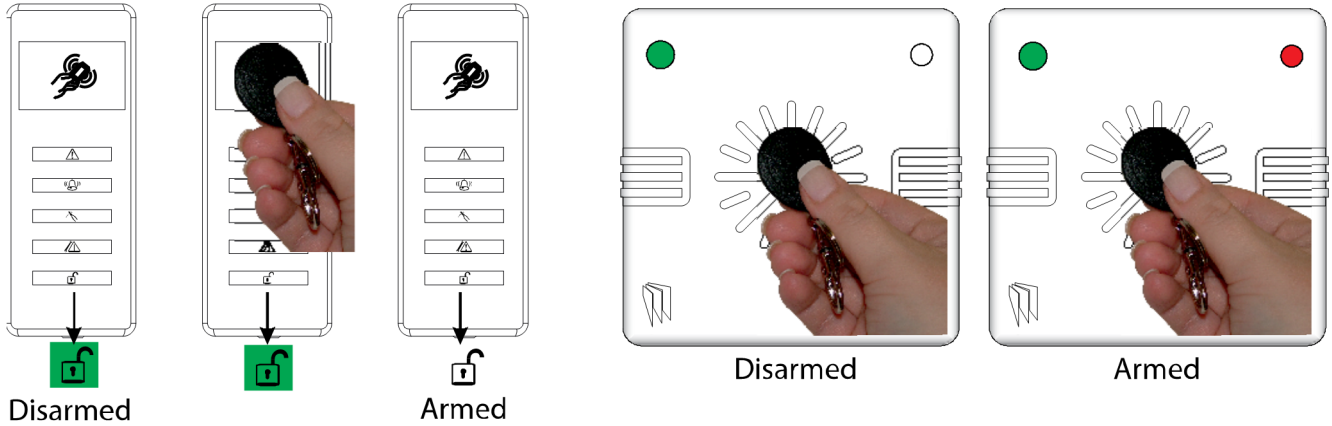
8. Using a Tag Reader

8.1 Setting and Unsetting

If you have a tag reader installed, then it will be possible to set and unset the EURO alarm system using a tag (the same tags can also be used to set/unset on the keypad).

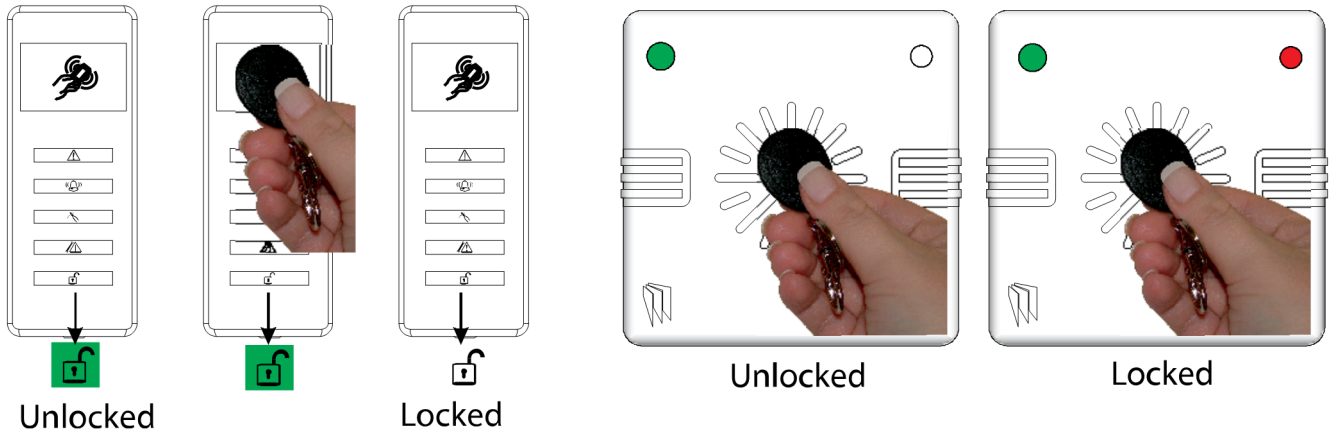
There are two types of readers that can be used with the EURO alarm system - the internal tag reader (used for indoors only) and the external tag reader (used for both indoors and outdoors).

Tags for the readers need to be programmed through the 'Change Codes' function in the Master Manager Menu (see page 19). The internal and external readers can be both assigned to individual areas, this will need to be set up by your alarm engineer.



8.2 Entry Control

The readers may be used for entry control, which means they can operate automatic locks for example as well as setting and unsetting the system. This can be set up by your alarm engineer.



External Reader Instructions:

Arming: Present a valid tag to the reader, the GREEN LED will illuminate on the external reader, remove the tag, the door will unlock, then present the same tag within 10 seconds and the system will set and the door will lock.


Disarming: Present a valid tag to the reader and then remove it, the status will be shown (the alarm symbol will illuminate indicating the system is armed on the internal reader and the RED LED on the external reader), present the same tag within 10 seconds again and your EURO alarm system will be disarmed, and the door will unlock.

Access Control/Entry Control: The readers can be used also for opening doors only without the ability to set and unset. Please contact your alarm engineer for more information on this feature.

9. Anti Code / Engineer Restore Facility

9.1 Anti-Code

Your alarm engineer may have set up your EURO alarm system so that either an 'Anti-Code' or 'Engineer Restore' is required in order to fully reset the EURO alarm system (your code will still silence the alarm, but it will not reset the system).

After alarm activation has occurred, enter a valid user code, or present a valid tag, or press  on the keyfob to silence the alarm.

The keypad will display as shown to the right.

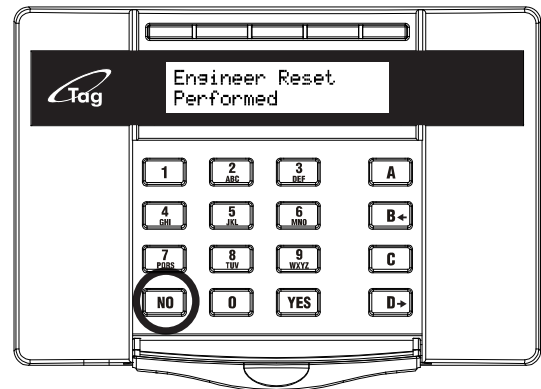
Take note of the number, on the screen and call your Alarm Receiving Centre (ARC).

Press **YES**.



When the time is displayed, enter the number given to you by the ARC. 'Engineer Restore Performed' will be displayed once the correct number has been entered.

Press **NO**.

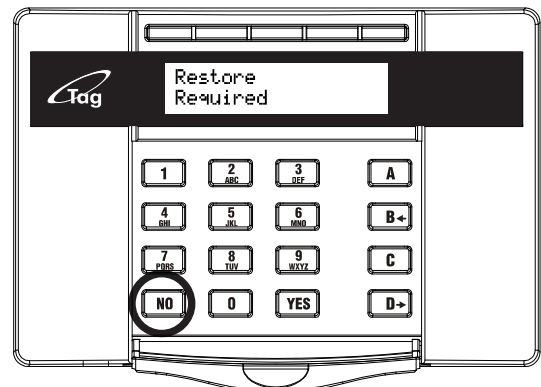


9.2 Engineer Reset

When the time is displayed, enter the Engineer code.

'Engineer Reset Performed' will be displayed.


Press **NO**.

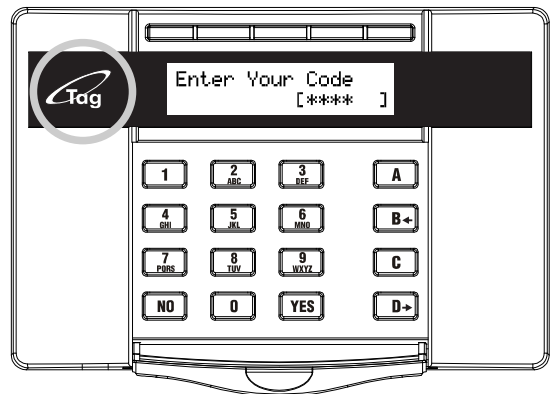


10. Intelligent Setting

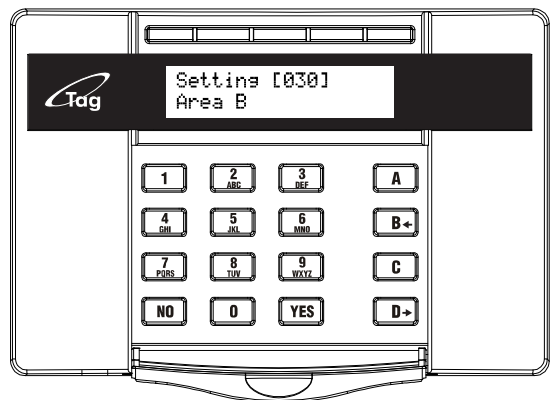
If intelligent set is enabled by your alarm engineer, the system automatically recognises whether to full set (Area A), or part set. (Area B).

NOTE: 'Flexi Set' (Page 19) should be disabled for this feature to work properly.

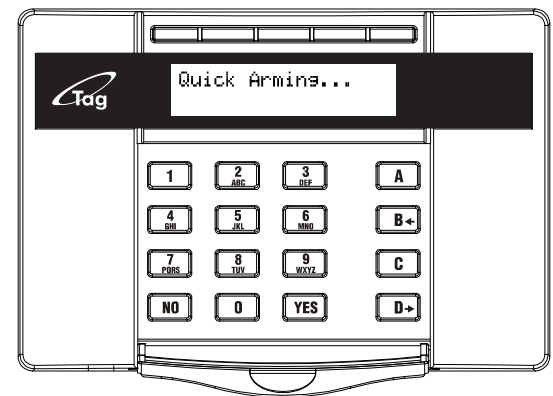
Enter a valid user code, or present a valid tag to the Tag symbol as shown, or press  on a keyfob.



The EURO alarm system will set in area B (the user code/tag/keyfob must be programmed for areas A and B).



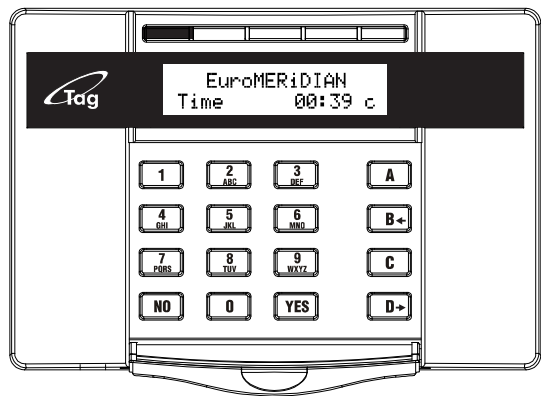
If a final exit input is activated during the setting procedure the system will quick set area A.



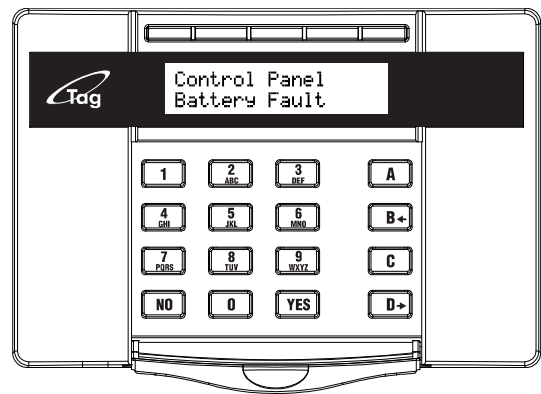
11. Fault Indications / Unable To Set

11.1 Fault Indications

If any faults occur on the EURO alarm system, these can be easily recognised by the flashing **ALERT LED**.
 After a valid code/tag has been presented, any faults will be displayed on the LCD display.



Depending on how the system has been set up by your alarm engineer, it may be possible to set the system with a fault, to do this enter your code and press **YES**.

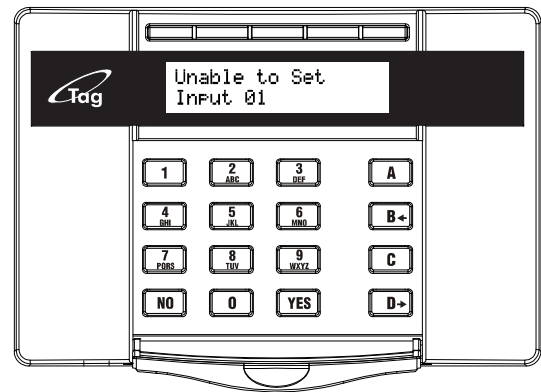


NOTE: Any fault may affect the overall performance of your alarm control panel and therefore your alarm engineer should be contacted for further assistance if any fault is active.

11.2 Unable to Set

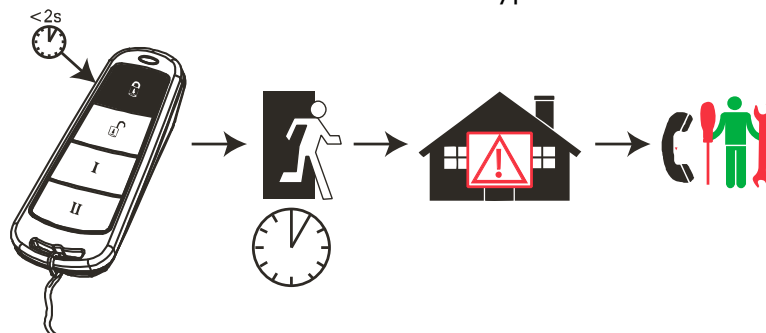
If 'unable to set' is displayed, it indicates that an input (zone) is open and the area where the input is should be checked for open windows, pets, movement etc.

If the problem cannot be resolved please contact your alarm engineer, or omit the input (page 16)



11.3 Keyfob Fault Indications

If the panel is unable to set for any reason, the keyfob status LED flashes AMBER indicating a fault is on the system. The fault will be shown on the keypad.

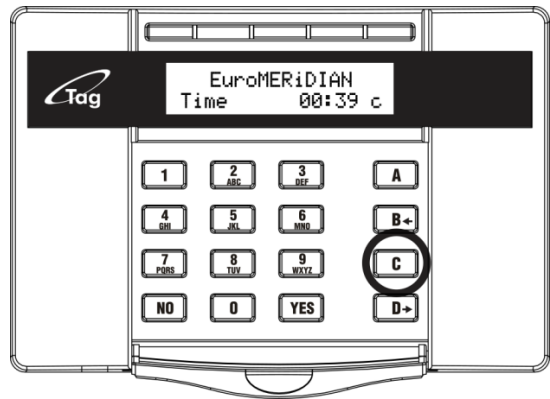


12. Advanced Functions

12.1 Chime Feature

The chime can be used for any input on the system. This can be set up by your alarm engineer. A 'chime' is heard after the selected input has been activated.

To enable the chime on the keypad, press **C** when the time is displayed in 'day mode'. 'c' will be displayed on the right side of the keypad display. Press **C** again to disable the chime feature.



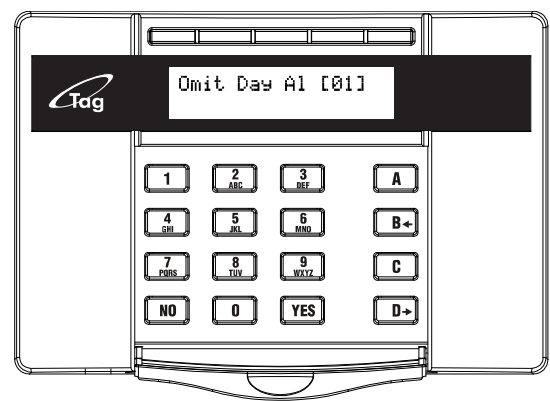
12.2 Omitting Inputs

A detector may need to be isolated if a room is occupied (e.g. by a pet).

Enter a user code/tag, once the EURO alarm system has started to set, press **YES**.

Select the inputs that need to be omitted and press **NO** once you have finished. After 10 seconds the exit time continues.

NOTE: Inputs have to be programmed as 'omittable' by your alarm engineer to enable this feature.



12.3 Keypad Hold Up

If an emergency alarm is needed, press and hold both **1** and **7**.

A 'hold up' alarm will be generated.

NOTE 1: The Hold Up facility needs to be enabled by your alarm engineer (either silent or as a full alarm)

2-Key HU and any duress codes programmed on the system by your alarm engineer are not permitted to send a signal to the Alarm Receiving Centre under police regulations in England, Wales or Northern Ireland

NOTE 2: The keyfob can also be programmed to support a hold up alarm. Please discuss this with your alarm engineer.



13. Master Manager Menu

A Master Manager Menu is available to access for the following functions:

Function	Description
Set Date and Time	Programs the date and time.
Omit Inputs	Omits any 24 inputs only (except Personal Attack inputs).
Change Codes	Adds/Edits/Deletes User codes, tags and keyfobs.
Review Logs	Displays all event log information.
Phone Book	Adds/Edits/Deletes SMS phone numbers if enabled.
Walk Test	Tests each input (zone)
Siren Test	Tests each external sounder.
Start CHC SMS Update	Sends a test call to the SMS station if SMS is enabled.
Dial Out Menu	Used for uploading/downloading.
Allow Engineer Menu	Enables or Disables Engineer access.
Block Remote Set	Blocks remote setting from the PC software.
Block UDL	Blocks uploading/downloading from the PC software..
Exit Manager Mode	Exits the Master Manager menu.

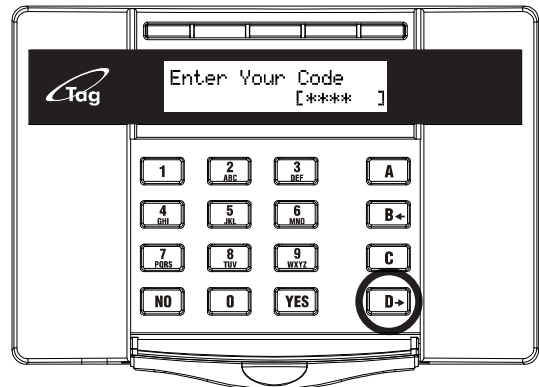
NOTE: The Master Manager code (default: 2222) allows access to all the options above. A 'user code' (user code #1 default: 1234) has access to the 'User Menu' which includes the functions: 'CHANGE CODE', 'REVIEW LOGS', 'ALLOW ENGINEER MENU', and 'EXIT USER MENU'.

13.1 Entering the Master Manager Menu

Press **D**.

Enter the Master Manager code or present the Master Manager tag.

Press **B** or **NO** to scroll through the different functions mentioned above.



13.2 Exiting the Master Manager Menu

Press **B** or **NO** keys to scroll through until 'EXIT MANAGER MODE' is displayed.

Press **YES**.

Or, when a main menu item is displayed (capital letters) press the **A** key.

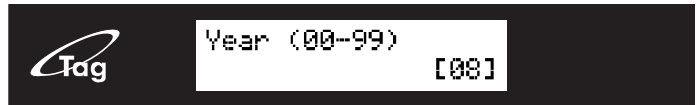


13.3 Set Date and Time

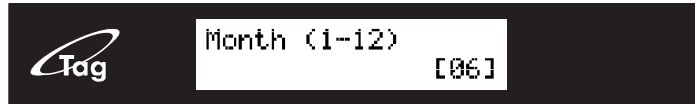
Press **B** or **NO** to scroll to 'SET DATE & TIME'. Press **YES**.



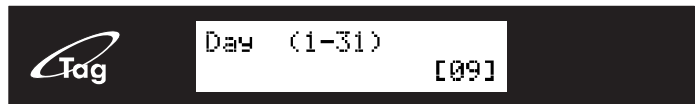
Enter the Year.
Press **YES**.



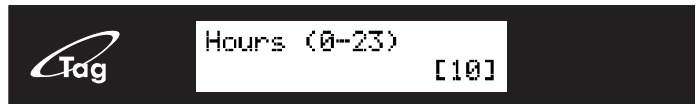
Enter the Month.
Press **YES**.



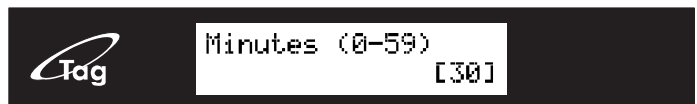
Enter the Day.
Press **YES**.



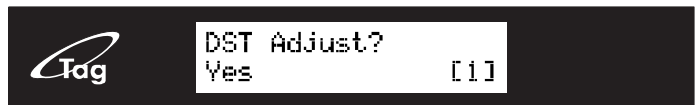
Enter the Hours.
Press **YES**.



Enter the Minutes.
Press **YES**.



Use **B** or **D** to enable / disable automatic update of the clock for Daylight Savings Time (DST).
Press **YES**.



13.4 Omit Inputs

Press **B** or **NO** to scroll to 'OMIT INPUTS'. Press **YES**.



Enter the inputs you require to be omitted for the next setting procedure.
Press **YES**.



NOTE: All inputs will be only omitted for the next setting procedure.

13.5 Change Codes (Adding codes, tags and keyfobs)

The 'CHANGE CODES' function allows adding, editing and deleting of user codes, tags and keyfobs (if wireless technology has been enabled by your alarm engineer). The master manager code can also be changed.

Depending on the EURO alarm system you have, the maximum number of user codes/tags changes, If the wireless technology is enabled, up to 32 keyfobs may be programmed.

13.5.1 Button Actions:

Each wireless keyfob has 4 buttons that can be programmed for any of the functions below:

No Action = Disables the button.

Show Status = If the keyfob is learnt the LED will flicker when asked for the status.

Set Area = Sets the chosen area. 'User Controls' will be displayed and will require an area to be chosen.

Unset Any Area = Unsets any area on the system.

Latch Output = Enables an output that your engineer may have programmed. 'Output' will be displayed and will require an output to be selected.

Timed Output = Enables an output for a period of time that your engineer may have programmed. 'Output' will be displayed and will require an output to be selected.

13.5.2 Flexi Set

Flexi-set allows you to choose which area to set if a user code is assigned to one or more area. If this function is disabled, when a user code is entered, the EURO alarm system will automatically set the area that the code is assigned to.

Press **B** or **NO** to scroll to 'CHANGE CODES'. Press **YES**.



To add a new code, tag, or keyfob press **YES**. Press **NO** to delete or change a user code (see further down for details).



Press **←** or **→** to choose a user number. Press **YES**.



Enter the new code, present a tag or press and hold a keyfob button until the display changes. Once 'asterisks' appear, the tag or user code will be now assigned to this user. Press **YES**.



Programming Wireless Keyfobs

If a keyfob is programmed, the 'User Name' will be displayed on the keypad.

Enter the user name. Press **YES**.



Press **←** or **→** to choose the button to program. Press **YES**.

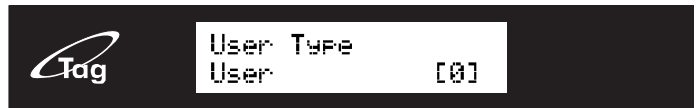


Press **←** or **→** to choose the action assigned to the button. Press **YES** and perform the further action as mentioned above ('Button Actions').



Press or to choose between 'User' or 'Manager'. Press **YES**

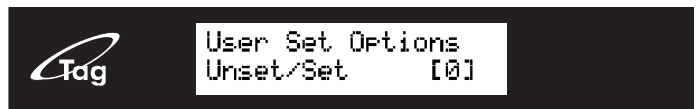
NOTE: This screen will not be displayed if you have programmed a wireless keyfob.



Select the areas that the user will be assigned to: A, B, C or D. Press **YES**.



Press or to choose between 'Unset/Set', 'Unset Only', 'Set Only' or 'None'. Press **YES**.
(This screen will not be displayed if you have programmed a wireless keyfob)



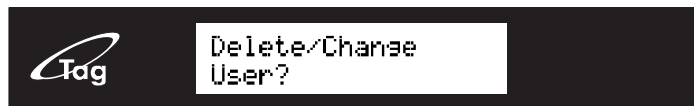
Press or to enable or disable 'Flexi-Set'. Press **YES**.
(This screen will not be displayed if you have programmed a wireless keyfob)



Enter the user name (for help on predictive text please see page 8) Press **YES**.



Press **YES** to delete or change a user.



Delete User

Press or to scroll through the users, or enter the user number and press **YES**.



Press **YES** to delete a user, or press **NO** to change a user.



Change User

Press **YES** to change a user code, and follow the screen shots previously.

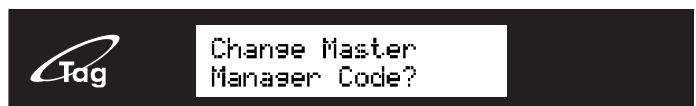


Change Master Manager Code

To edit the Master Manager Code, press **YES**.

Enter the new code, present a tag or press and hold a keyfob button until the display changes. Press **YES**.

Repeat the same procedure mentioned previously.

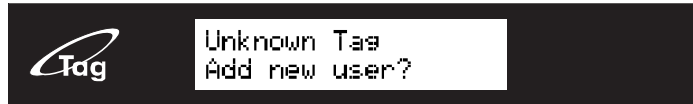


13.5.3 Quick Adding of a New Tag

If during the unset mode you present a tag to the system which is not recognised, you will be asked if you would like to add it as a valid user.

Quick Adding of a New Tag

Press **YES** to add the tag.
 Enter a valid master manager code/tag to authorise the EURO alarm system to accept the new tag.



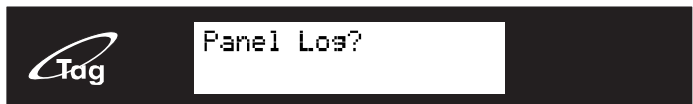
13.6 Review Logs

The 'Review Logs' function monitors all operational information of the EURO alarm system, such as setting/unsetting information and alarm activations etc.

Press **B** or **NO** to scroll to 'REVIEW LOGS'. Press **YES**.



Press **YES**.



The most recent event will be displayed, press **B** or **D** to scroll backwards and forwards through the log.



Press the **C** key to show more information (such as which input activated, or which user set the system etc.)



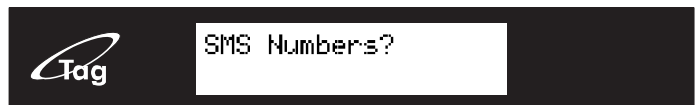
13.7 Phonebook

If SMS texting is programmed, 4 mobile numbers may be programmed and can be changed in this function. If any numbers are added, you will need to enable each one and also perform a CHC SMS test to activate each call (see page 22). If "do not use" is shown on the display of a number, then a telephone number already exists that is communicating to an Alarm Receiving Centre (this can only be changed by your engineer).

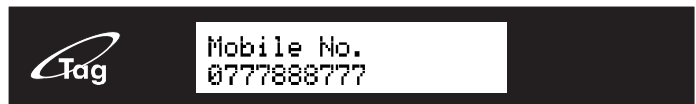
Press **B** or **NO** to scroll to 'PHONEBOOK'. Press **YES**.



Press **B** or **D** to scroll through the different telephone numbers.



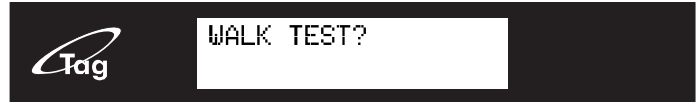
Enter the mobile number. Press **YES**. Press **◀** or **▶** to enable or disable the number. Press **YES**.



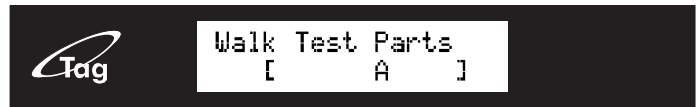
13.8 Walk Test

The 'Walk Test' function allows the testing of all programmed inputs on the EURO alarm system.

Press **[B]** or **[NO]** to scroll to 'WALK TEST'. Press **[YES]**.

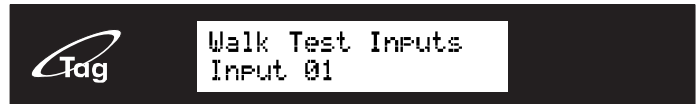


Select which level set to walk test. Press **[YES]** to walk test all inputs or press the **[NO]** to walk test an input individually.



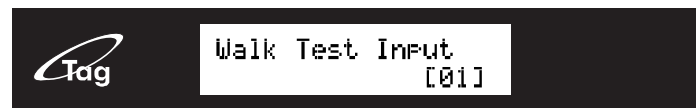
Walk Test Inputs

Walk test the mentioned inputs on the display. After all inputs have been walk test successfully 'walk test completed' will be displayed.



Walk Test Individual Inputs

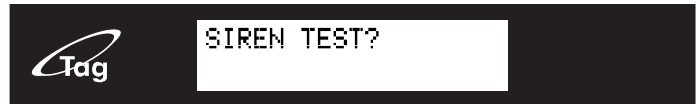
Press **[←]** or **[→]** to scroll through the different inputs and press **[YES]** to walk test that input.



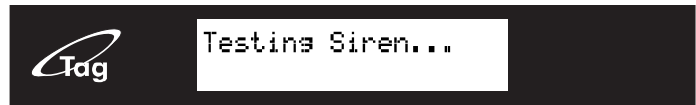
13.9 Siren Test

This function is used to test the siren and strobe outputs.

Press **[B]** or **[NO]** to scroll to 'SIREN TEST'. Press **[YES]**.



This tests both the siren and strobe outputs. Press **[YES]**.



13.10 Start CHC SMS Update

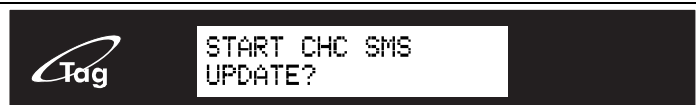
Your EURO alarm system may have been configured to send messages to a mobile telephone. If so, the system will call the appropriate messaging bureau and forward the message to your mobile telephone whenever an event occurs that is important to you.

Message calls are charged at the normal network rate current at the time of the call. The fee for routine checking is collected automatically via a premium rate number when the EURO panel makes its regular authorisation and routing call to the Castle Host Computer (CHC). Should this call fail, the display will show 'CHC Test Fail' until the next time that the call is made successfully (see next page for making test calls to the CHC). This acts as a reminder that SMS Message signalling may not be operational, but will not interfere with this, or any other aspect of the alarm system. If you wish to change the information sent to your mobile telephone, please contact your alarm system installation company.

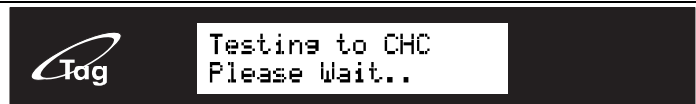
NOTE 1: Please note that all CHC calls are 50p per call

NOTE 2: It is recommended that this test is only undertaken under the supervision of your alarm installation engineer.

Press **[B]** or **[NO]** keys to scroll to 'START CHC SMS UPDATE'. Press **[YES]**.



The control panel will then call the CHC. If 'Failed CHC test' is displayed, please call your engineer.



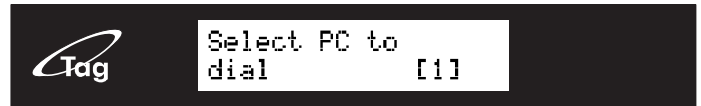
13.11 Dial Out Menu

The control panel may be dialled into, and programming information kept on a PC using the InSite UDL software. This function allows the control panel to dial a Pre-programmed PC telephone number (programmed by your engineer) to directly dial to a PC. This is usually used when your engineer requests it.

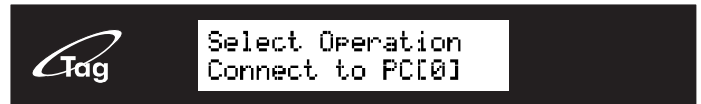
Press **[B]** or **[NO]** keys to scroll to 'DIAL OUT MENU'. Press **[YES]**.



Press **[Left Arrow]** or **[Right Arrow]** to scroll through the different PC numbers, press **[YES]** to dial that number



Press **[Left Arrow]** or **[Right Arrow]** to select the operation that needs to be performed. Press **[YES]**.



The control panel will dial the programmed PC. If this fails please contact your engineer.

Press **[NO]**.



13.12 Allow Engineer Menu

If this function is enabled, the engineer will require authorisation from you before they can access the engineering menu.

Press the **[B]** or **[NO]** keys to scroll to 'ALLOW ENGINEER MENU'. Press **[YES]**.



Press **[Left Arrow]** or **[Right Arrow]** to select either 'Yes' or 'No'. Press **[YES]**.



13.13 Block Remote Set

Your alarm system may be configured so that your alarm installation company can remotely set/unset. Should you wish to block this access, you can enable this function.

Press the **[B]** or **[NO]** keys to scroll to 'BLOCK REMOTE SET'. Press **[YES]**.



Press **[Left Arrow]** or **[Right Arrow]** to select either 'Yes' or 'No'. Press **[YES]**.



13.14 Block UDL

Your alarm system may be configured so that your alarm installation company can upload and download into the control panel, Should you wish to block this access, and you can enable this function.

Use the **[B]** and **[NO]** keys to scroll to '**BLOCK UDL**'. Press the **[YES]** key



Press **[←]** or **[→]** to select either 'Yes' or 'No'. Press **[YES]**.



14. Disclaimer

PSTN Communications

The EURO 46, 162 and 280 may have a PSTN Modem connected that has the ability to send:

1. Electronic messages to an Alarm Receiving Centre (ARC),
2. Text Messages via Short Message Services (SMS).

In order for the PSTN modem to communicate correctly, the alarm engineer must connect the PSTN modem (installed on the EURO alarm system) to an appropriate Plain Old Telephone System (POTS) which has an appropriate service level agreement with a suitable POTS operator. Moreover, the service level agreement must allow the EURO alarm system the ability to dial Premium Rate numbers.

In order for the EURO alarm system to send SMS messages, it must dial an embedded number that connects to an SMS server. The EURO alarm system passes the SMS message to the SMS server, which in turn forwards the SMS to the user's mobile phone. Please check with your alarm engineer for exact charges.

The EURO alarm system will dial the Pyronix Host Computer periodically in order to check and verify the SMS server routing information. Charges for this service are raised by use of a premium rate telephone number and are currently 50p per call plus your network provider's access charge*.

Electronic messages and SMS messages are carried by the POTS/SMS Server operator by means of networks and transmission facilities over which Pyronix Ltd has no control. Pyronix shall therefore not be responsible for the POTS/SMS Server operator's service level or the POTS/SMS Server operator's network failures.

*Charges correct as of 01/04/2016

15. Engineer Contacts and Tables

15.1 Engineer Information

Alarm Company	
Date of Installation	
Site Reference	
Engineer Name	
Engineer Contact Number	
Installed to Grade	
Environmental Class	II

Your panel is suitable for use in installations designed to meet the European requirements of Security Grade 2 or 3 (depending which system is installed), Environmental Class 2. When all parts are working normally, this equipment in combination with the PSTN modem and suitable ARC equipment will meet the requirements of ATS2.

External set/unset readers and wireless sirens meet the requirements of environmental class 4. Number of Code Differs: tag hex code.

Your panel is designed to automatically inhibit certain functionality. The factory default settings are shown below:

15.1.1 Intruder Alarm Signal

After 3* unconfirmed alarms in the same area or 1 confirmed alarm. * This figure is programmable by the Engineer.

15.1.2 Tamper Alarm Signal

After 3* unconfirmed alarms in the same area or 1 confirmed alarm. * This figure is programmable by the Engineer.

15.1.3 Keypad

After 30 key presses without entering a valid code, keys are disabled for 90 seconds. After reinstatement, this will be repeated after each 7 key presses until a valid code is entered.

15.1.4 Tag Reader (Or Tag at a keypad)

After 6 presentations of an invalid tag, the reader will be disabled for 90 seconds. After reinstatement, this will be repeated for each invalid tag until a valid tag is used.

15.2 Certification

All Wireless devices comply with the following EU requirements:

EMC Directive	2004/108/EC
Low Voltage Directive	2006/95/EC
R&TTE Directive	1999/5/EC

And meet the following standards where relevant:

EN 61000-6-3:2007 +A1:2011	EMC. Generic emission standard. Residential, commercial and light industry
EN 50130-4:2011	Immunity requirements for components of fire, intruder and social
EN 60950-1:2006 +A12:2012	Information technology equipment. Safety. General requirements
EN 50131-5-3:2005+ A1:2008	Grade 2. Interconnections for equipment using radio frequency techniques
ETSI EN 301489- 3:2000	EMC. Radio equipment. Part 3: Short range devices (SRD) 9kHz to 40GHz
ETSI EN 300 220	EMC. Receiver Class 1, Environmental Category 1
CEPT/ERC	Recommendation 70-03 Annex 1

Compliant operation is only guaranteed when installed and operated according to the relevant installation and user manuals.

15.3 Input Contact Table

Input No	Input Name	Input Areas	Description
1			
2			
3			
4			
5			
6			
7			
8			
9			
10			
11			
12			
13			
14			
15			
16			
17			
18			
19			
20			
21			
22			
23			
24			
25			
26			
27			
28			
29			
30			
31			
32			
33			
34			
35			
36			
37			
38			
39			
40			
41			
42			
43			
44			
45			
46			
47			
48			
49			
50			
51			
52			
53			
54			
55			
56			
57			
58			
59			
60			
61			
62			

Input No	Input Name	Input Areas	Description
63			
64			
65			
66			
67			
68			
69			
70			
71			
72			
73			
74			
75			
76			
77			
78			
79			
80			
81			
82			
83			
84			
85			
86			
87			
88			
89			
90			
91			
92			
93			
94			
95			
96			
97			
98			
99			
100			

15.4 Code Table

Code No	Code Type (Code/Tag/Fob)	Code Areas	Code Name
1			
2			
3			
4			
5			
6			
7			
8			
9			
10			
11			
12			
13			
14			
15			
16			
17			
18			
19			
20			
21			
22			
23			
24			
25			
26			
27			
28			
29			
30			
31			
32			
33			
34			
35			
36			
37			
38			
39			
40			
41			
42			
43			
44			
45			
46			
47			
48			
49			
50			
51			
52			
53			
54			
55			
56			

Code No	Code Type (Code/Tag/Fob)	Code Areas	Code Name
57			
58			
59			
60			
61			
62			
63			
64			
65			
66			
67			
68			
69			
70			
71			
72			
73			
74			
75			
76			
77			
78			
79			
80			
81			
82			
83			
84			
85			
86			
87			
88			
89			
90			
91			
92			
93			
94			
95			
96			
97			
98			
99			
100			

For electrical products sold within the European Community: At the end of the electrical product's useful life, it should not be disposed of with household waste. Please recycle where facilities exist. Check with your Local Authority or retailer for recycling advice in your country. When disposing of the product the batteries must be removed and disposed of separately in accordance with the local regulations

