

# TABLETBACKET

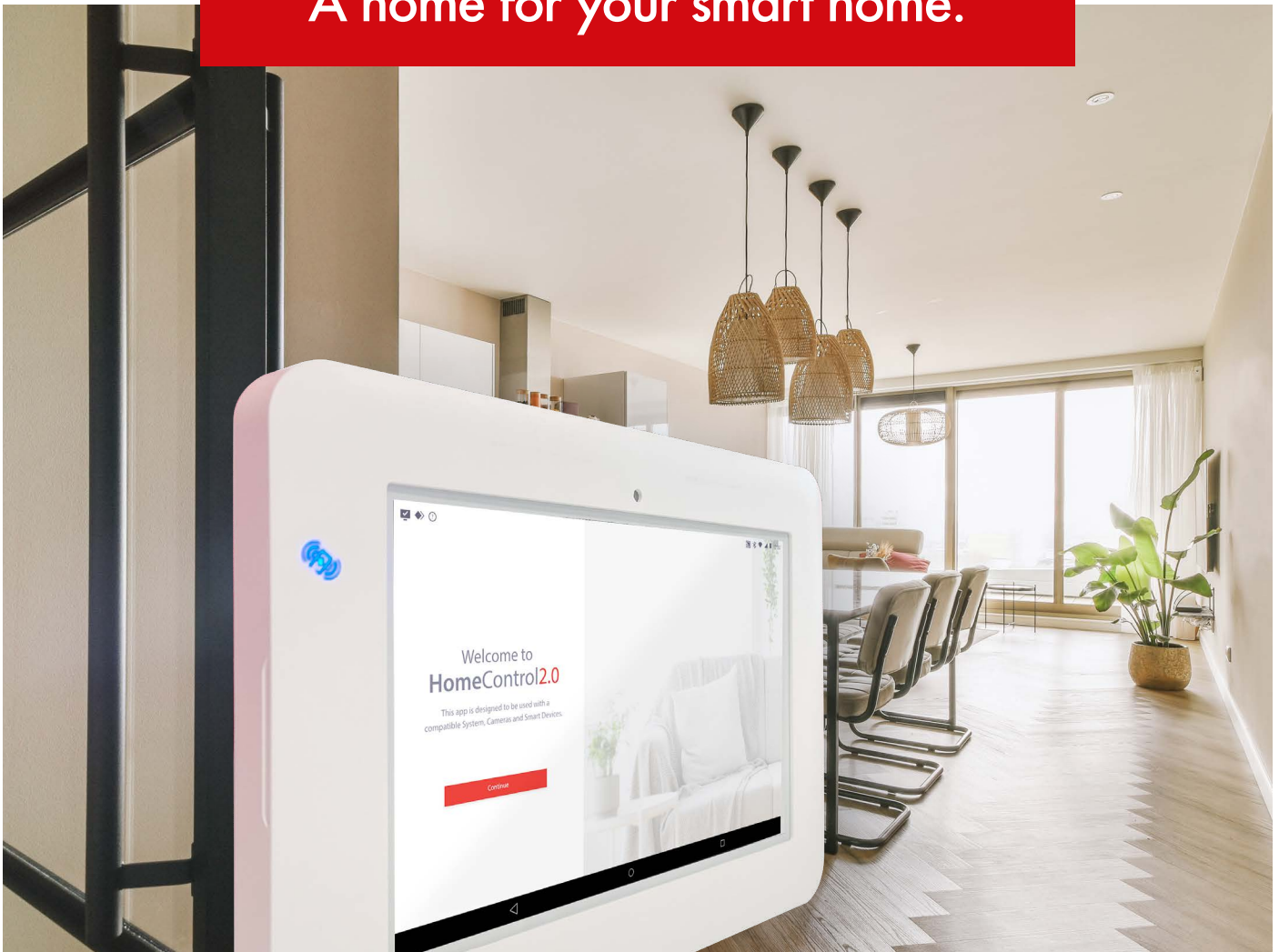
## Complete system control, in one convenient place

Providing a handy home for the AndroidTablet, the TabletBracket wall-mounts the tablet, whilst the quick-release magnetic front ensures simple and rapid access when it's needed for use around the property. Made from 2.5mm ABS plastic, the bracket is an elegant frame for housing and charging the tablet.

The optional addition of the ProxReader PCB\* to the TabletBracket introduces arming and disarming by tag, and confers Grade 2 security on the system, resulting in a powerful and convenient interface when combined with an AndroidTablet running HomeControl2.0.

\*Note: the ProxReader PCB must be wired to the Enforcer V11 via the RS485 bus.

A home for your smart home.



[for more information  
scan or click here](#)

# TABLETBACKET

## Comprehensive functionality

Encompass the functionality and convenience of a keypad, tag reader and video verification into one wall-mounted hub. The AndroidTablet provides flexibility in arming/disarming methods, whether wall-mounted or mobile, and the optional ProxReader also enables Grade 2 compliance when installed.

## User-friendly interface

With HomeControl2.0 available on both mobile device and AndroidTablet, the design and functionality is mirrored making it easy to navigate and use. A familiar interface on both phone and tablet means there's no need for users to learn to use multiple apps.

## Custom-designed

The white 2.5mm ABS plastic frame has been custom-designed and manufactured to perfectly fit around the AndroidTablet, and features integrated cable routes for the charging wire (PSU not supplied) with housing for the optional proximity reader.

## Quick-release front panel

Finding a home for the AndroidTablet doesn't mean restricting its mobility. The TabletBracket's magnetic quick-release front is easily detached to remove the tablet, so it can be used around the property. When done, the tablet simply clicks back into place and the front snaps back on.

## Introduce Grade 2 compliance

The optional proximity reader can be installed into the TabletBracket so that previously ungraded systems which were using the AndroidTablet can become Grade 2 compliant.

Tablet Bracket and Proximity Reader	
Partcodes	ANDROIDTABLET-WALLBRACKET PROX-TAB
Physical	
Dimensions (W x H x D)	296 x 212 x 16mm
Weight	205g
Casing	2.5mm ABS
Colour	White
LED indication	Prox reader location - blue
Electrical	
Operation voltage	12VDC nominal
Current consumption	<400mA quiescent
Environmental	
Storage temperature	-20°C to 50°C
Operation temperature	-10°C to 40°C
Certifications	
Security grade (SG)	2
Security standards	EN50131-1-2006+A3-2020 EN50131-3-2009 PD6662-2017
Environmental class (EC)	II
Compliance	UKCA, CE

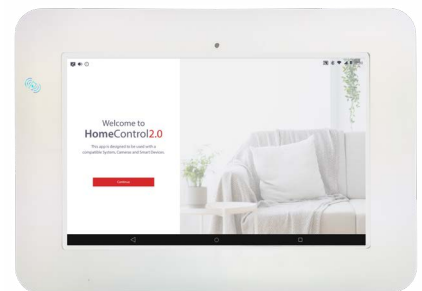
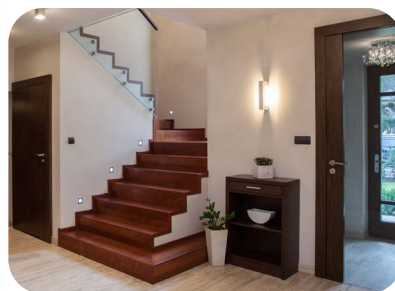
Please note: All specifications provided are with the optional proximity reader installed.





For AndroidTablet  
information scan here  
[or click here](#)



For Proximity Reader  
information scan here  
[or click here](#)



Follow us on LinkedIn  @pyronixLtd 

www.facebook.com/pyronix  @pyronix 

Pyronix Limited, Secure House, Braithwell Way, Hellaby, Rotherham, South Yorkshire, S66 8QY, UK

T: +44 (0)1709 700 100 E: sales@pyronix.com W: www.pyronix.com